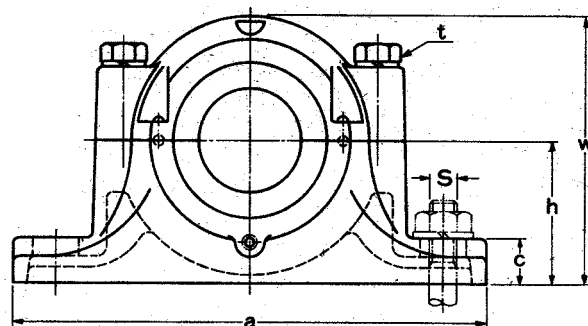
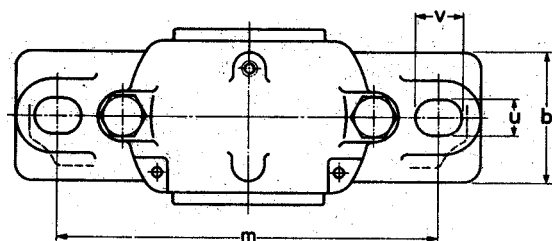


Plummer blocks : adapter mounting

SN6 series

S6 series



Shaft dia mm d_1	Plummer Block number	Dimensions mm													Mass kg
		h	a	b	c	l	w	m	u	v	D	g	t	S	
20	SN605	50	185	52	22	80	90	150	15	20	62	34	M 8	M12	2.2
25	SN606	50	185	52	22	82	95	150	15	20	72	37	M10	M12	2.3
30	SN607	60	205	60	25	90	110	170	15	20	80	41	M10	M12	3.0
35	SN608	60	205	60	25	95	115	170	15	20	90	43	M10	M12	3.1
40	SN609	70	255	70	28	105	130	210	18	23	100	46	M12	M16	4.4
45	SN610	70	255	70	30	115	135	210	18	23	110	50	M12	M16	5.0
50	SN611	80	275	80	30	120	150	230	18	23	120	53	M12	M16	5.8
55	SN612	80	280	80	30	125	155	230	18	23	130	56	M12	M16	7.7
60	SN613	95	315	90	32	130	175	260	22	27	140	58	M16	M20	9.8
65	SN615	100	345	100	35	140	195	290	22	27	160	65	M16	M20	12
70	SN616	112	345	100	35	145	212	290	22	27	170	68	M16	M20	15
75	SN617	112	380	110	40	155	218	320	26	32	180	70	M20	M24	17
80	SN618	112	400	110	33	160	230	320	26	35	190	74	M20	M24	21
85	SN619	125	420	120	36	170	245	350	26	35	200	77	M20	M24	24
90	SN620	140	420	120	38	175	280	350	26	35	215	83	M20	M24	29
100	SN622	150	460	130	40	190	300	390	28	38	240	90	M24	M24	38
110	SN624	160	540	160	50	205	325	450	33	42	260	96	M24	M30	47
115	SN626	170	560	160	50	215	350	470	33	42	280	103	M24	M30	64
125	SN628	180	630	170	55	235	375	520	35	45	300	112	M30	M30	70
135	SN630	190	680	180	55	245	395	560	35	45	320	118	M30	M30	75
140	SN632	200	710	190	60	255	415	580	42	52	340	124	M30	M36	110

1. The model number of the stabilizing ring indicates its outside diameter and width.

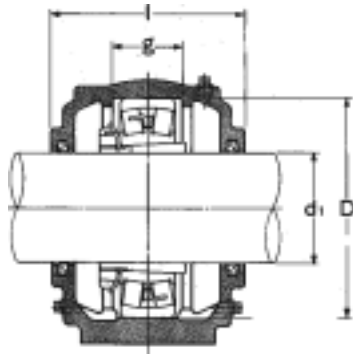
Notes : 1. A hook bolt is provided for plummer blocks larger than the SN618.

2. An oil holes or a grease nipple and an oil extracting hole will be provided on request.

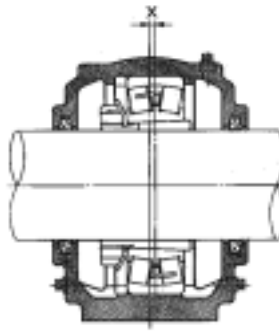
Sizes : For The SN608 and smaller models, M6 x 0.75.

For models SN609 through SN617, PT 1/8.

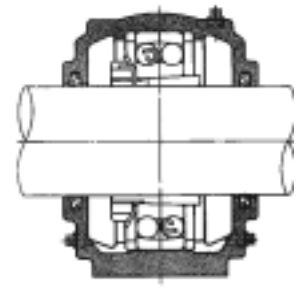
For the SN618 and larger models, PT 1/4.



Floating end



Fixed end
(with 1 stabilizing ring)



Fixed end
(with 2 stabilizing rings)

Self aligning ball bearing and adapter number	Stabilizing rings		Relevant parts Spherical roller bearing and adapter number	Stabilizing rings		Oil seal Synthetic rubber number		Shaft dia. mm d ₁
	number ¹⁾	Q'ty		number ¹⁾	Q'ty	number	Q'ty	
1305K + H 305 2305K + H2305	SR 62 × 8.5 SR 62 × 10	2 1	—	—	—	ZF 5	2	20
1306K + H 306 2306K + H2306	SR 72 × 9 SR 72 × 10	2 1	—	—	—	ZF 6	2	25
1307K + H 307 2307K + H2307	SR 80 × 10 SR 80 × 10	2 1	—	—	—	ZF 7	2	30
1308K + H 308 2308K + H2308	SR 90 × 10 SR 90 × 10	2 1	—	—	—	ZF 8	2	35
1309K + H 309 2309K + H2309	SR 100 × 10.5 SR 100 × 10	2 1	—	—	—	ZF 9	2	40
1310K + H 310 2310K + H2310	SR 110 × 11.5 SR 110 × 10	2 1	—	—	—	ZF10	2	45
1311K + H 311 2311K + H2311	SR120 × 12 SR120 × 10	2 1	21311K + H 311 22311BK + H 2311	SR120 × 12 SR120 × 10	2 1	ZF11	2	50
1312K + H 312 2312K + H2312	SR130 × 12.5 SR130 × 10	2 1	21312BK + H 2312 22312BK + H 2312	SR130 × 12.5 SR130 × 10	2 1	ZF12	2	55
1313K + H 313 2313K + H2313	SR140 × 12.5 SR140 × 10	2 1	21313K + H 313 222313BK + H 2313	SR140 × 12.5 SR140 × 10	2 1	ZF13	2	60
1315K + H 315 2315K + H2315	SR160 × 14 SR160 × 10	2 1	21315K + H 315 22315BK + H 2315	SR160 × 14 SR160 × 10	2 1	ZF15	2	65
1316K + H 316 2316K + H2316	SR170 × 14.5 SR170 × 10	2 1	21316K + H 316 22316BK + H 2316	SR170 × 14.5 SR170 × 10	2 1	ZF16	2	70
1317K + H 317 2317K + H2317	SR180 × 14.5 SR180 × 10	2 1	21317K + H 317 22317BK + H 2317	SR180 × 14.5 SR180 × 10	2 1	ZF17	2	75
1318K + H 318 2318K + H2318	SR190 × 15.3 SR190 × 9.5	2 1	21318K + H 318 22318BK + H 2318	SR190 × 15.3 SR190 × 9.5	2 1	ZF18	2	80
1319K + H 319 2319K + H2319	SR200 × 15.8 SR200 × 9.5	2 1	21319K + H 319 22319BK + H 2319	SR200 × 15.8 SR200 × 9.5	2 1	ZF19	2	85
1320K + H 320 2320K + H2320	SR215 × 17.8 SR215 × 9.5	2 1	21320K + H 320 22320BK + H 2320	SR215 × 17.8 SR215 × 9.5	2 1	ZF20	2	90
1322K + H 322 2322K + H2322	SR240 × 19.8 SR240 × 9.5	2 1	22322BK + H2322	SR240 × 9.5	1	ZF22	2	100
—	—	—	22324BK + H2324	SR260 × 9.5	1	ZF24	2	110
—	—	—	22326BK + H2326	SR280 × 9.5	1	ZF26	2	115
—	—	—	22328BK + H2328	SR300 × 9.5	1	ZF28	2	125
—	—	—	22330BK + H2330	SR320 × 9.5	1	ZF30	2	135
—	—	—	22332BK + H2332	SR340 × 9.5	1	ZF32	2	140

Notes : 3. When one stabilizing ring is used, the fixed end bearing is offset from the center of the housing by a distance equal to half the width of the ring.

4. Please contact **SKI** when the plummer block is to be used with oil lubrication.

Ordering :

When ordering, specify all parts needed. For example, order one SN605 housing, one 1305K bearing, one H305X adapter, two SR62 × 8.5 stabilizing rings (for fixed end only) and two ZF5 oil seals. If you order only an SN605, you will only receive an SN605 housing.