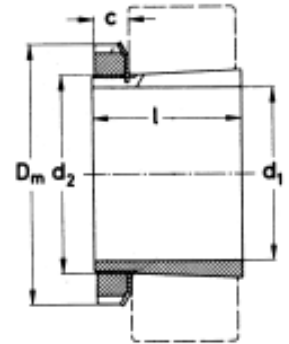


## ADAPTER SLEEVES

(With Locknut & Locking Member)

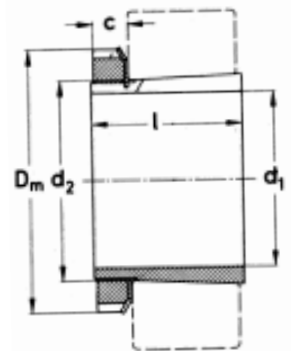


Taper 1 : 12

Shaft Diameter mm inch	Adapter No. H HE		Dimensions						Suitable Bearings to match Sleeve	Approx. Weight kg
			d <sub>1</sub> mm H HE		l mm	D <sub>m</sub> mm	c mm	d <sub>2</sub> Thread		
20 3/4	H 205	HE 205	20	19.05	26	38	8	M 25 X 1.5	1205 K 20205 K	0.07
	H 305	HE 305	20	19.05	29	38	8	M 25 X 1.5	2205 K 1305 K 20305 K 22205 K	0.08
	H 2305	HE 2305	20	19.05	35	38	8	M 25 X 1.5	2305 K	0.09
25 1	H 206	HE 206	25	25.40	27	45	8	M 30 X 1.5	1206 K 20206 K	0.13
	H 306	HE 306	25	25.40	31	45	8	M 30 X 1.5	2206 K 1306 K 20306 K 22206K	0.14
	H 2306	HE 2306	25	25.40	38	45	8	M 30 X 1.5	2306 K	0.17
30	H 207		30		29	52	9	M 35 X 1.5	1207 K 20207 K	0.14
	H 307		30		35	52	9	M 35 X 1.5	2207 K 1307 K 20307 K 22207 K	0.15
	H 2307		30		43	52	9	M 35 X 1.5	2307 K	0.19
35 1 1/4	H 208	HE 208	35	31.75	31	58	10	M 40 X 1.5	1208 K 20208 K	0.17
	H 308	HE 308	35	31.75	36	58	10	M 40 X 1.5	2208 K 1308 K 20308 K 21308 K 22208 K	0.19
	H 2308	HE 2308	35	31.75	46	58	10	M 40 X 1.5	2308 K 22308 K	0.24
40 1 1/2	H 209	HE 209	40	38.10	33	65	11	M 45 X 1.5	1209 K 20209 K	0.23
	H 309	HE 309	40	38.10	39	65	11	M 45 X 1.5	2209 K 1309 K 20309 K 21309 K 22209 K	0.25
	H 2309	HE 2309	40	38.10	50	65	11	M 45 X 1.5	2309 K 22309 K	0.28
45 1 3/4	H 210	HE 210	45	44.45	35	70	12	M 50 X 1.5	1210 K 20210 K	0.27
	H 310	HE 310	45	44.45	42	70	12	M 50 X 1.5	2210 K 1310 K 20310 K 21310 K 22210 K	0.30
	H 2310	HE 2310	45	44.45	55	70	12	M 50 X 1.5	2310 K 22310 K	0.36
5 2	H 211	HE 211	50	50.80	37	75	12	M 55 X 2	1211 K 20211 K	0.31
	H 311	HE 311	50	50.80	45	75	12	M 55 X 2	2211 K 1311 K 20311 K 21311 K 22211 K	0.35
	H 2311	HE 2311	50	50.80	59	75	12	M 55 X 2	2311 K 22311 K	0.42
55	H 212		55		38	80	13	M 60 X 2	1212 K 20212 K	0.35
	H 312		55		47	80	13	M 60 X 2	2212 K 1312 K 20312 K 21312 K 22212 K	0.39
	H 2312		55		62	80	13	M 60 X 2	2312 K 22312 K	0.48
60 2 1/4	H 213	HE 213	60	57.15	40	85	14	M 65 X 2	1213 K 20213 K	0.40
	H 313	HE 313	60	57.15	50	85	14	M 65 X 2	2213 K 1313 K 20313 K 21313 K 22213 K	0.46
	H 2313	HE 2313	60	57.15	65	85	14	M 65 X 2	2313 K 22313 K	0.56
60	H 214		60		41	92	14	M 70 X 2	1214 K 20214 K	0.59
	H 314		60		52	92	14	M 70 X 2	2214 K 1314 K 20314 K 21314 K 22214 K	0.72
	H 2314		60		68	92	14	M 70 X 2	2314 K 22314 K	0.90

## ADAPTER SLEEVES

(With Locknut & Locking Member)

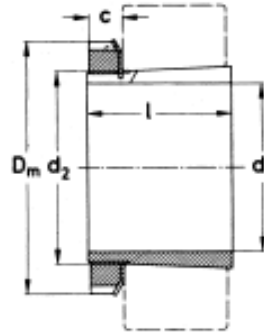


Taper 1 : 12

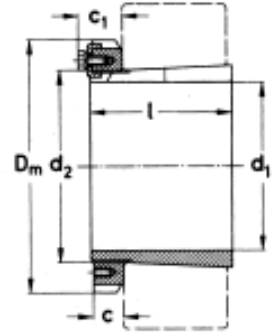
Shaft Diameter mm inch	Adapter No. H HE		Dimensions						Suitable Bearings to match Sleeve	Approx. Weight kg
			d <sub>1</sub> mm H HE		l mm	D <sub>m</sub> mm	c mm	d <sub>2</sub> Thread		
65 2 1/2	H 215	HE 215	65	63.50	43	98	15	M 75 X 2	1215 K 20215 K	0.71
	H 315	HE 315	65	63.50	55	98	15	M 75 X 2	2215 K 1315 K 20315 K 21315 K 22215 K	0.83
	H 2315	HE 2315	65	63.50	73	98	15	M75 X 2	2315 K 22315 K	1.05
70 2 3/4	H 216	HE 216	70	69.85	46	105	17	M 80 X 2	1216 K 20216 K	0.88
	H 316	HE 316	70	69.85	59	105	17	M 80 X 2	2216 K 1316 K 20316 K 21316 K 22216 K	1.03
	H 2316	HE 2316	70	69.85	78	105	17	M 80 x 2	2316 K 22316 K	1.28
75 3	H 217	HE 217	75	76.20	50	110	18	M 85 X 2	1217 K 20217 K	1.02
	H 317	HE 317	75	76.20	63	110	18	M 85 X 2	2217 K 1317 K 20317 K 21317 K 22217 K	1.18
	H 2317	HE 2317	75	76.20	82	110	18	M 85 X 2	2317 K 22317 K	1.45
80 3 1/4	H 218	HE 218	80	82.55	52	120	18	M 90 X 2	1218 K 20218 K	1.19
	H 318	HE 318	80	82.55	65	120	18	M 90 X 2	2218 K 1318 K 20318 K 21318 K 22218 K	1.39
	H 2318	HE 2318	80	82.55	86	120	18	M 90 X 2	2318 K 22318 K 23218 K	1.69
85 3 3/8	H 219	HE 219	85	85.72	55	125	19	M 95 X 2	1219 K 20219 K	1.37
	H 319	HE 319	85	85.72	68	125	19	M 95 X 2	2219 K 1319 K 20319 K 21319 K 22219 K	1.56
	H 2319	HE 2319	85	85.72	90	125	19	M 95 X 2	2319 K 22319 K 23219 K	1.92
90 3 1/2	H 220	HE 220	90	88.90	58	130	20	M 100 X 2	1220 K 20220K	1.49
	H 320	HE 320	90	88.90	71	130	20	M 100 X 2	2220K 1320 K 20320 K 21320 K 22220K	1.69
	H 3120	HE 3120	90	88.90	76	130	20	M 100 X 2	2320 K 22320 K 23220 K	1.80
	H 2320	HE 2320	90	88.90	97	130	20	M 100 X 2		
95	H 221		95		60	140	20	M 105 X 2	1221 K 20221 K	1.72
	H 321		95		74	140	20	M 105 X 2	1321 K	1.95
100 4	H 222	HE 222	100	101.60	63	145	21	M 110 X 2	1222 K 20222 K	1.93
	H 322	HE 322	100	101.60	77	145	21	M110 X 2	20322 K 2222K 21322 K	2.18
	H 3122	HE 3122	100	101.60	81	145	21	M 110 X 2	23122 K	2.25
	H 2322	HE 2322	100	101.60	105	145	21	M110 X 2	2322 K 22322 K 23222K	2.74
110 4 1/4	H 3024	HE 3024	110	107.95	72	145	22	M 120 X 2	20224 K 23024 K	1.93
	H 3124	HE 3124	110	107.95	88	155	22	M 120 X 2	20324 K 23124 K 22224 K	2.64
	H 2324	HE 2324	110	107.95	112	155	22	M 120 X 2	22324 K 23224 K	3.19
115 4 1/2	H 3026	HE 3026	115	114.30	80	155	22	M130 X 2	20226 K 23026 K	2.85
	H 3126	HE 3126	115	114.30	92	165	23	M 130 X 2	20326 K 23126 K 22226 K	3.66
	H 2326	HE 2326	115	114.30	121	165	23	M 130 X 2	22326 K 23226 K	4.60

## ADAPTER SLEEVES

(With Locknut & Locking Member)



with lock washer MB  
taper 1 : 12

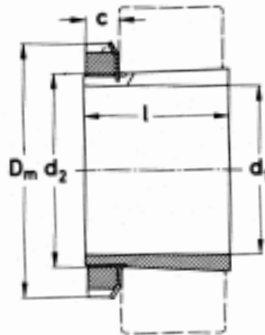


with locking clamp MS

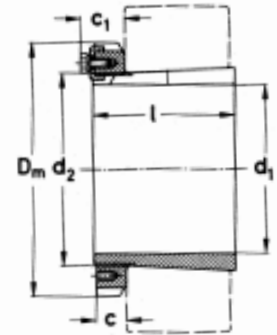
Shaft Diameter mm inch	Adapter No.		Dimensions							Suitable Bearings to match Sleeve	Approx. Weight kg
	H	HE	d, mm H HE		l mm	D <sub>m</sub> mm	c mm	C <sub>1</sub> mm	d <sub>2</sub> Thread		
125 5	H 3028	HE 3028	125	127.00	82	165	24		M 140 X 2	20228 K 23028 K	3.16
	H 3128	HE 3128	125	127.00	97	180	24		M 140 X 2	20328 K 23128 K 22228 K	4.34
	H 2328	HE 2328	125	127.00	131	180	24		M 140 X 2	22328 K 23228 K	3.55
135 5 1/4	H 3030	HE 3030	135	133.35	87	180	26		M 150 X 2	20230 K 23030 K	3.89
	H 3130	HE 3130	135	133.55	111	195	26		M 150 X 2	20330 K 23130 K 22230 K	5.52
	H 2330	HE 2330	135	133.35	139	195	26		M 150 X 2	23230 K 22330 K	6.63
140 5 1/2	H 3032	HE 3032	140	139.70	93	190	28		M 160 X 3	20232 K 23032 K	5.21
	H 3132	HE 3132	140	139.70	119	210	28		M 160 X 3	20332 K 23132 K 22232 K	7.67
	H 2332	HE 2332	140	139.70	147	210	28		M 160x 3	23232 K 22332 K	9.14
150 6	H 3034	HE 3034	150	152.40	101	200	29		M 170 X 3	20234 K 23034 K	5.99
	H 3134	HE 3134	150	152.40	122	220	29		M 170 X 3	20334 K 23134 K 22234 K	8.38
	H 2334	HE 2334	150	152.40	154	220	29		M 170 X 3	23234 K 22334 K	10.20
160 6 1/2	H 3036	HE 3036	160	165.10	109	210	30		M 180 X 3	20236 K 23036 K 20336 K	6.83
	H 3136	HE 3136	160	165.10	131	230	30		M 180 X 3	23136 K 22236 K	9.50
	H 2336	HE 2336	160	165.10	161	230	30		M 180 X 3	23236 K 222336 K	11.30
170 6 3/4	H 3038	HE 3038	170	171.45	112	220	31		M 190 x 3	20238 K 23038 K 20338 K	7.45
	H 3138	HE 3138	170	171.45	141	240	31		M 190 x 3	23138 K 22238 K	10.80
	H 2338	HE 2338	170	171.45	169	240	31		M 190 X 3	23238 K 22238 K	12.60
180 7	H 3040	HE 3040	180	177.80	120	240	32		M 200 X 3	20240 K 23040 K 20340 K	9.19
	H 3140	HE 3140	180	177.80	150	250	32		M 200 X 3	23140 K 22240 K	12.10
	H 2340	HE 2340	180	177.80	176	250	32		M 200 X 3	23240 K 22340 K	13.90
200	H 3044		200		126	260	30	41	Tr 220 X 4	20244 K 23044 K 20344 K	10.30
	H 3144		200		161	280	35		Tr 220 X 4	23144 K 22244 K	14.70
	H 2344		200		186	280	35		Tr 220 X 4	23244 K 22344 K	16.80
	H 2344 HG		200		186	280	35		Tr 220 X 4	23244 K 22344 K	16.70
220	H 3048		220		133	290	34	46	Tr 240 X 4	20248 K 23048 K 20348 K	13.20
	H 3148		220		172	300	37		Tr 240 X 4	23148 K 22248 K	17.30
	H 2348		220		199	300	37		Tr 240 X 4	23248 K 22348 K	19.85
	H 2348 HG		220		199	300	37		Tr 240 X 4	23248 K 22348 K	19.70
240	H 3052		240		145	310	34	46	Tr 260 X 4	20252 K 23052 K	15.30
	H 3152		240		190	330	39		Tr 260 X 4	23152 K 22252 K	22.00
	H 2352		240		211	330	39		Tr 260 X 4	23252 K 22352 K	24.40
	H 2352 HG		240		211	330	39		Tr 260 X 4	23252 K 22352 K	24.20

## ADAPTER SLEEVES

(With Locknut & Locking Member)



with lock washer MB  
taper 1 : 12



with locking clamp MS  
taper 1 : 12

Shaft Diameter mm	Adapter No. H	Dimensions						Suitable Bearings to match Sleeve	Approx. Weight kg
		d <sub>1</sub> mm	l mm	D <sub>m</sub> mm	c mm	c <sub>1</sub> mm	d <sub>2</sub> Thread		
260	H 3056	260	152	330	38	50	Tr 280 X 4	20256 K 23056 K	17.70
	H 3156	260	195	350	41		Tr 280 X 4	23156 K 22256 K	24.50
	H 2356	260	224	350	41		Tr 280 X 4	23256 K 22356 K	28.10
	H 2356 HG	260	224	350	41		Tr 280 x 4	23256 K 22356 K	27.80
280	H 3060	280	168	360	42	54	Tr 300 X 4	23060 K	22.80
	H 3160	280	208	380	40	53	Tr 300 X 4	23160 K 2260 K	30.50
	H 3160 HG	280	208	380	40	53	Tr 300 X 4	23160 K	30.50
	H 3260 HG	280	208	380	40	53	Tr 300 X 4	23160 K 22260 K	30.20
300	H 3064 HG	300	171	380	42	55	Tr 320 X 5	23064 K	24.60
	H 3164	300	226	400	42	56	Tr 320 X 5	23164 K 22264 K	35.50
	H 3164 HG	300	226	400	42	56	Tr 320 X 5	23164 K 22264 K	34.90
	H 3264 HG	300	258	400	42	56	Tr 320 X 5	23264 K	39.30
320	H 3068 HG	320	187	400	45	58	Tr 340 X 5	23068 K	28.70
	H 3168 HG	320	254	440	55	72	Tr 340 X 5	23168 K	49.50
	H 3268 HG	320	288	440	55	72	Tr 340 X 5	23268 K	54.60
340	H 3072 HG	340	188	420	45	58	Tr 360 X 5	23072 K	30.50
	H 3172 HG	340	259	460	58	75	Tr 360 X 5	23172 K	54.20
	H 3272 HG	340	299	460	58	75	Tr 360 X 5	23272 K	60.60
360	H 3076 HG	360	193	450	48	62	Tr 380 X 5	23076 K	35.80
	H 3176 HG	360	264	490	60	77	Tr 380 X 5	23176 K	61.70
	H 3276 HG	360	310	490	60	77	Tr 380 X 5	23276 K	69.60
380	H 3080 HG	380	210	470	52	66	Tr 400 X 5	23080 K	41.30
	H 3180 HG	380	272	520	62	82	Tr 400 X 5	23180 K	70.60
	H 3280 HG	380	328	520	62	82	Tr 400 X 5	23280 K	81.00
400	H 3084 HG	400	212	490	52	66	Tr 420 X 5	23084 K	43.70
	H 3184 HG	400	304	540	70	90	Tr 420 X 5	23184 K	84.20
	H 3284 HG	400	352	540	70	90	Tr 420 X 5	23284 K	94.00
410	H 3088 HG	410	228	520	60	77	Tr 440 X 5	23088 K	65.20
	H 3188 HG	410	307	560	70	90	Tr 440 X 5	23188 K	104.00
	H 3288 HG	410	361	560	70	90	Tr 440 X 5	23288 K	118.00
430	H 3092 HG	430	234	540	60	77	Tr 460 x 5	23092 K	69.50
	H 3192 HG	430	326	580	75	95	Tr 460 x 5	23192 K	116.00
	H 3292 HG	430	382	580	75	95	Tr 460 X 5	23292 K	132.00
450	H 3096 HG	450	237	560	60	77	Tr 480 X 5	23096 K	73.30
	H 3196 HG	450	335	620	75	95	Tr 480 X 5	23196 K	133.00
	H 3296 HG	450	397	620	75	95	Tr 480 X 5	23296 K	152.00